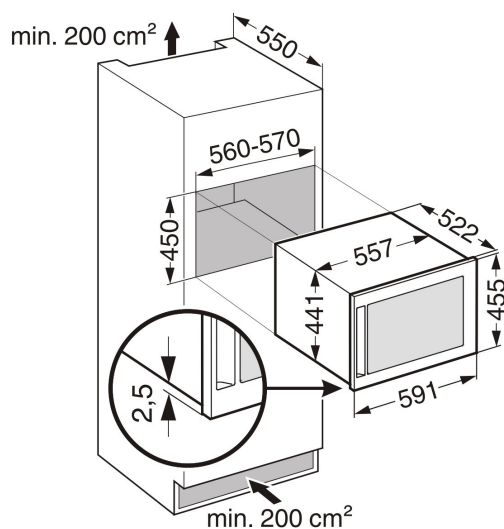
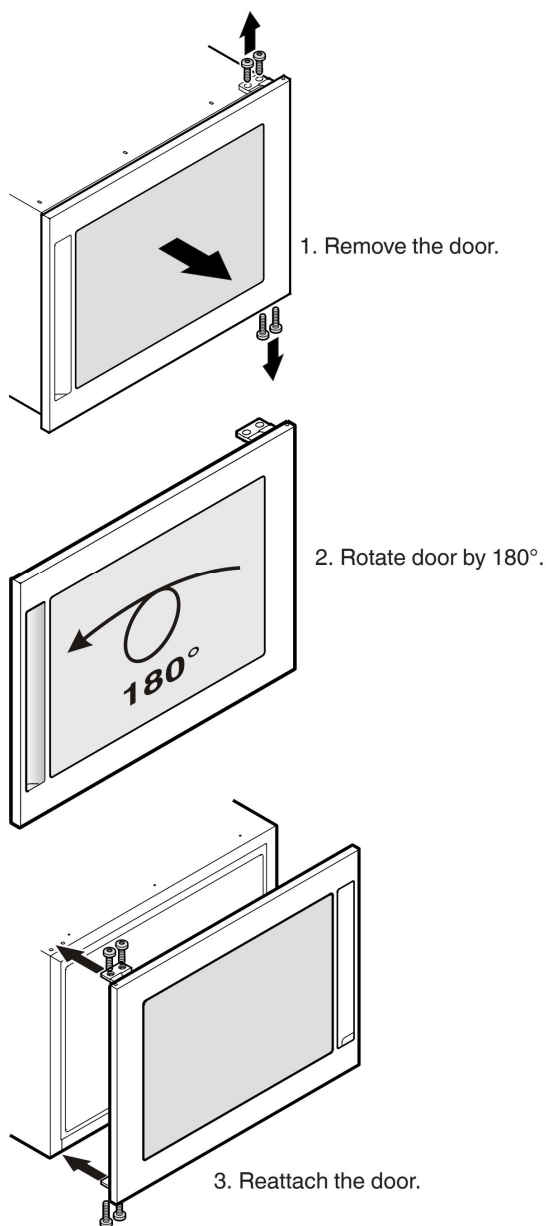


## Installation dimensions (mm)

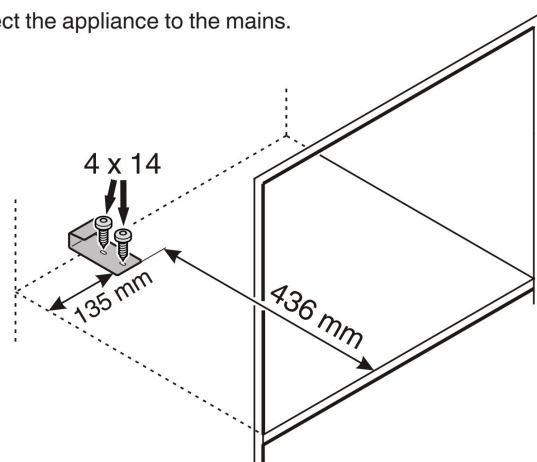


## Changing over door hinges

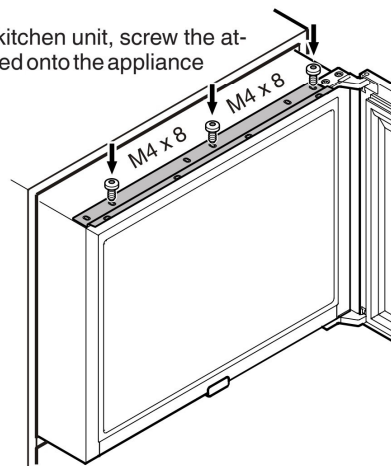


## Installing the appliance

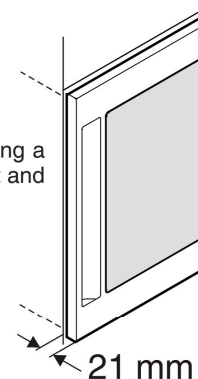
1. Secure the stop bracket in the recess with screws.
2. Connect the appliance to the mains.



3. Before installing in a kitchen unit, screw the attachment plate provided onto the appliance with screws M4 x 8).



4. Slide the appliance into the recess leaving a 21 mm gap between the body of the unit and the front face of the door.



5. Then secure the appliance with 3.5 x 17 chip-board screws through the top bracket.

